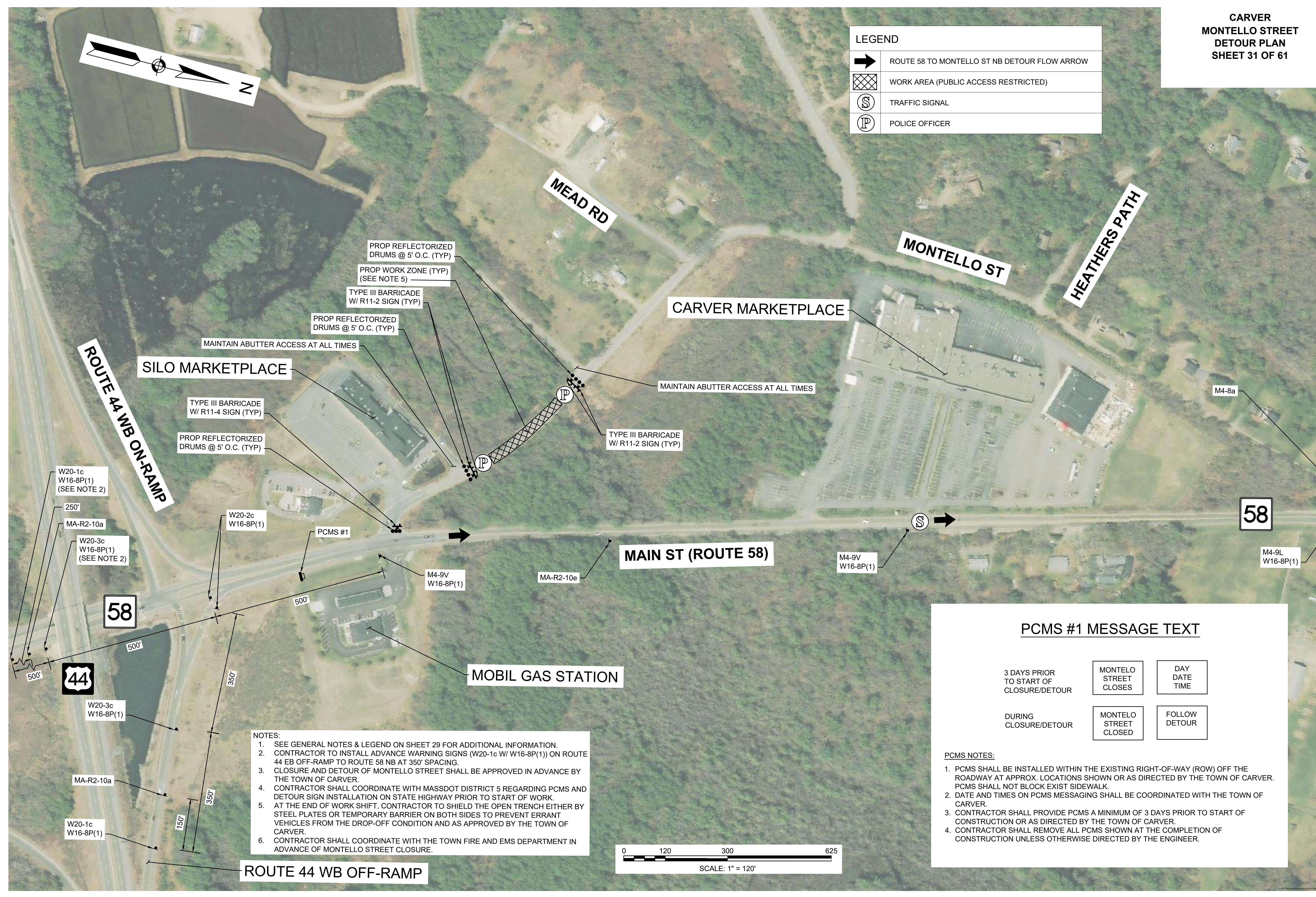
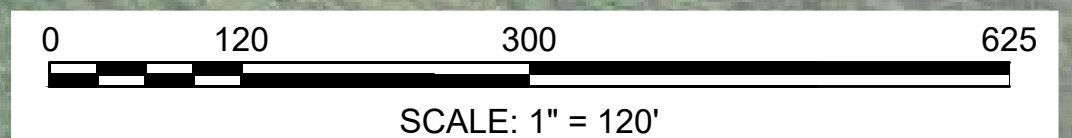


LEGEND	
	ROUTE 58 TO MONTELLO ST NB DETOUR FLOW ARROW
	WORK AREA (PUBLIC ACCESS RESTRICTED)
	TRAFFIC SIGNAL
	POLICE OFFICER



- NOTES:**
- SEE GENERAL NOTES & LEGEND ON SHEET 29 FOR ADDITIONAL INFORMATION.
 - CONTRACTOR TO INSTALL ADVANCE WARNING SIGNS (W20-1c W/ W16-8P(1)) ON ROUTE 44 EB OFF-RAMP TO ROUTE 58 NB AT 350' SPACING.
 - CLOSURE AND DETOUR OF MONTELLO STREET SHALL BE APPROVED IN ADVANCE BY THE TOWN OF CARVER.
 - CONTRACTOR SHALL COORDINATE WITH MASSDOT DISTRICT 5 REGARDING PCMS AND DETOUR SIGN INSTALLATION ON STATE HIGHWAY PRIOR TO START OF WORK.
 - AT THE END OF WORK SHIFT, CONTRACTOR TO SHIELD THE OPEN TRENCH EITHER BY STEEL PLATES OR TEMPORARY BARRIER ON BOTH SIDES TO PREVENT ERRANT VEHICLES FROM THE DROP-OFF CONDITION AND AS APPROVED BY THE TOWN OF CARVER.
 - CONTRACTOR SHALL COORDINATE WITH THE TOWN FIRE AND EMS DEPARTMENT IN ADVANCE OF MONTELLO STREET CLOSURE.



PCMS #1 MESSAGE TEXT

3 DAYS PRIOR TO START OF CLOSURE/DETOUR	MONTELO STREET CLOSURES	DAY DATE TIME
DURING CLOSURE/DETOUR	MONTELO STREET CLOSED	FOLLOW DETOUR

PCMS NOTES:

- PCMS SHALL BE INSTALLED WITHIN THE EXISTING RIGHT-OF-WAY (ROW) OFF THE ROADWAY AT APPROX. LOCATIONS SHOWN OR AS DIRECTED BY THE TOWN OF CARVER. PCMS SHALL NOT BLOCK EXIST SIDEWALK.
- DATE AND TIMES ON PCMS MESSAGING SHALL BE COORDINATED WITH THE TOWN OF CARVER.
- CONTRACTOR SHALL PROVIDE PCMS A MINIMUM OF 3 DAYS PRIOR TO START OF CONSTRUCTION OR AS DIRECTED BY THE TOWN OF CARVER.
- CONTRACTOR SHALL REMOVE ALL PCMS SHOWN AT THE COMPLETION OF CONSTRUCTION UNLESS OTHERWISE DIRECTED BY THE ENGINEER.